

Expansive Pacific Ocean Views



25905 Enclave Court ~ Bay Ridge of Monterey

Very Desirable, Private and Secluded Setting

Relish the magnificent and expansive Ocean Views available from the last private lot on Enclave Court. This sizeable parcel is over 11 acres guarantying absolute privacy and serenity for years to come. Enclave Court (literally translated as a small, distinct area within a larger one) is the last developed section of this gated estate neighborhood known for its sunny and warm location and extraordinary views. New estate homes enjoy all of the peace, privacy and tranquility of European country lifestyle living yet, are just minutes away from the hustle and bustle of the peninsula cities. Premium building sites of this grandeur are virtually unavailable in Monterey County anywhere. Image your dream residence in this dramatic setting or build with the plans already approved for construction.

Offered at \$975,000

You Deserve the Best ~ Bay Ridge



GAYLE CRUSAN

(831) 626-5106

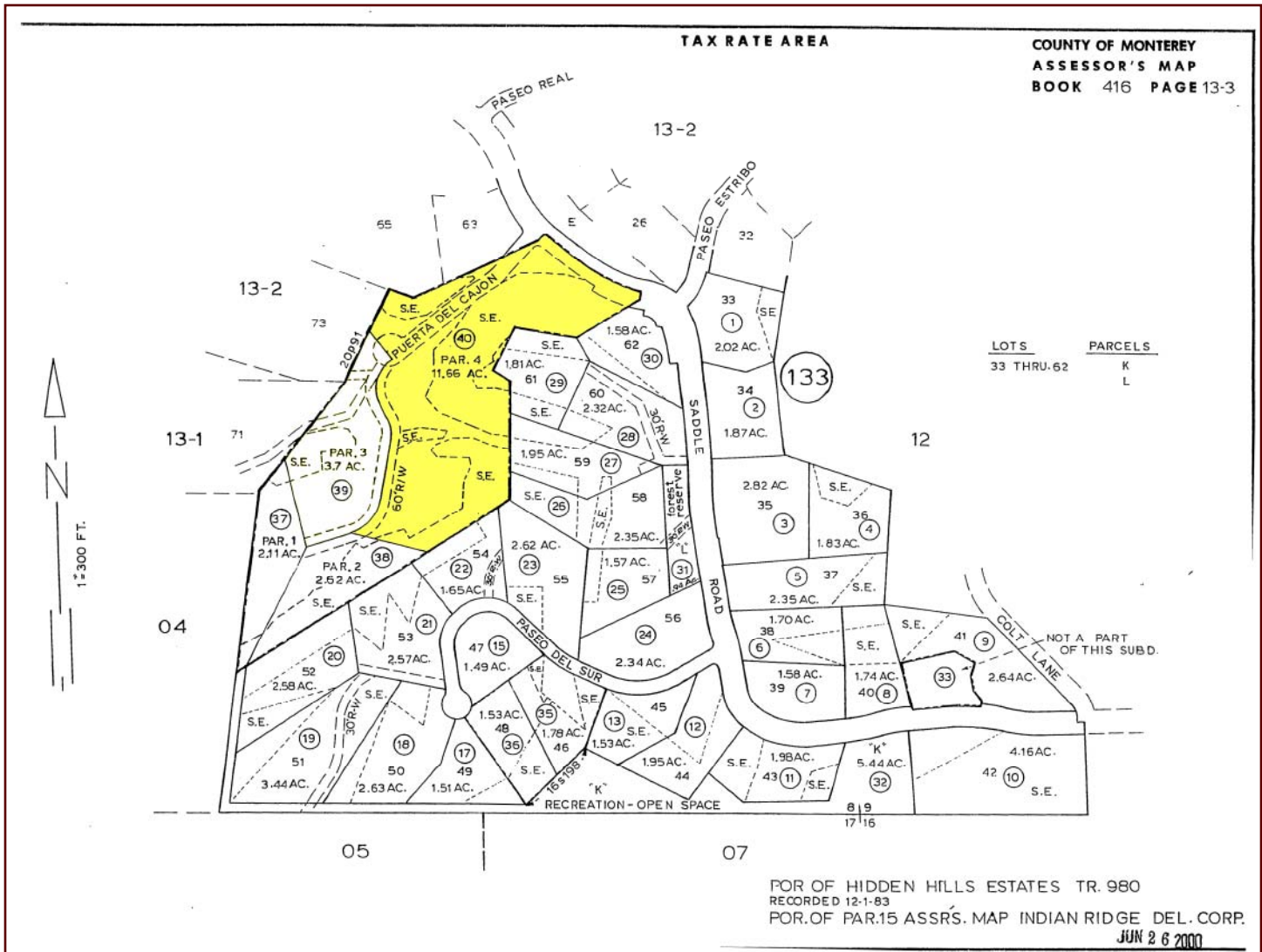
MARK TAMAGNI

(831) 596-1019

HOMES IN THE SUN

INTERNATIONAL ESTATES, INC.

www.internationalestates.com



Bay Ridge of Monterey, California



Minutes Away, Yet Miles Apart

LOCATION: Sitting high above the spectacular California's Pacific Coast, Bay Ridge enjoys stunning and breathtaking views from its private estate parcels. Its central location along the "Gateway to the Monterey Peninsula" makes it convenient to all cities and areas in Monterey County. The Monterey Airport is just 5 minutes away, and it is 12 miles to Carmel, 12 miles to Salinas and only 8.0 miles to downtown Monterey or Carmel Valley Village.

PRIVACY: Established in 1985 at 1100 feet above sea level Bay Ridge has lot sizes which vary from 1.5 to 15 acres. Each parcel was carefully planned to blend with the natural terrain, maximize views and provide outstanding privacy from the adjacent neighbor. The community comprises over 400 picturesque acres with only 113 residential building lots. In addition there are 17 dedicated open space parcels and the location is adjacent to several scenic conservation areas. It is truly an amazing place where you can actually hear the sound of silence.

WEATHER: Most importantly this location enjoys exceptional weather for the area. At approximately 1100 feet, Bay Ridge is frequently above the fog-line and in the warmth of the sun. The temperature is 5 to 10 degrees warmer than Monterey proper on any given day allowing for the utilization of outdoor spaces on a consistent basis.

VALUE: With it larger lots sizes, private settings and estate homes with ample water, Bay Ridge offers a higher quality of life, all at an exceptional price point on the Monterey Peninsula. Come take a look and see what paradise has to offer.

Discriminating persons, seeking a tranquil environment of exquisite beauty, privacy, magnificent views, and impeccable weather will find in BAY RIDGE the culmination of their dreams.

Information deemed to be accurate but not guaranteed