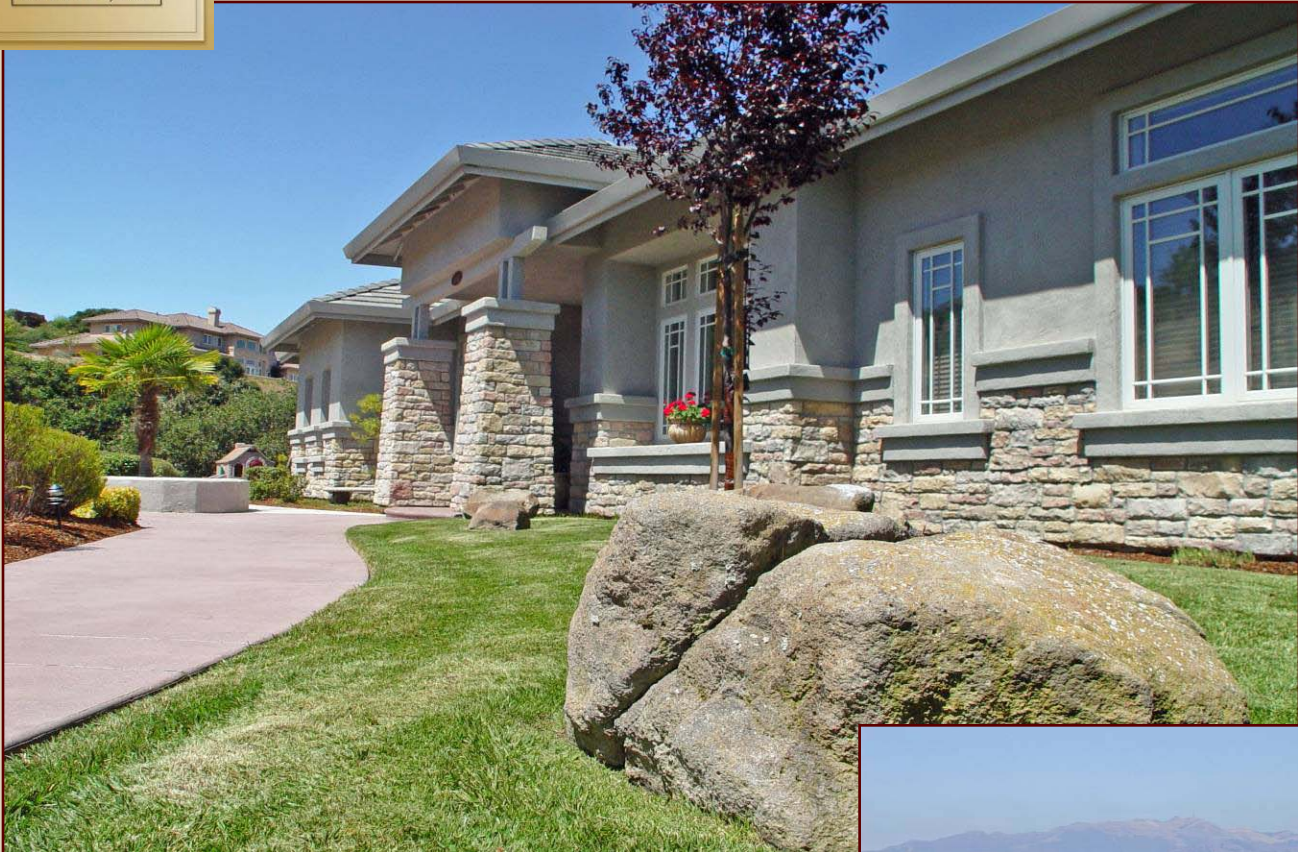




Everlasting Views & Grandeur in Prominence



19660 WOODCREST DRIVE ~ LAS PALMAS

The great 16th Century architect Palladio specifies classically correct proportions for an entry hall: "the length shall be twice the breadth". Those classic dimensions form the core of this single level "Monarch" floor plan and hint at the wealth of architectural elements recognized the world over for their eternal appeal. Coffered ceilings define the public rooms. A fireplace and a capacious pantry in the hearth room promise the warmth and abundance of an ancestral kitchen. Lavish detail prevails throughout and an entire wing is devoted to the master suite with a grand oval tub within a curved window in the master bath. This grand residence is tastefully decorated and bursting with custom features.

The magnificent site behind the exclusive Prominence gates is perched high atop the hill to capture scintillating views from almost every room. Twinkling city lights at night and a patch work of abundant green fields dot the landscape across the valley during the day. This is truly a special place within this dignified and sophisticated community.

Offered at \$1,199,000



*Gayle Crusan
Mark Tamagni*



DREAMS... We turn them into Your Address

Exterior Features	Interior Features
<ul style="list-style-type: none"> ◆ Gorgeous city light and valley views ◆ Eight foot (8') double wood entry doors ◆ Stone accented exterior facade ◆ 1.34 Acre premium site with large off street parking ◆ Custom walkways and stamped concrete driveway ◆ Professionally landscaped yard with boulder accents ◆ Fire resistant concrete tile roof 	<ul style="list-style-type: none"> ◆ Dramatic and Soaring 12 foot ceilings ◆ Open floor plan with Grande room layout ◆ Coffered 13 foot ceiling treatments ◆ Extensive floor tile ◆ Luxurious master suite with fireplace, His/Hers closets, His/Hers vanities and massive walk-in shower ◆ Separate study or office space ◆ Custom paint and window coverings
Other Information	Kitchen/Family room
<ul style="list-style-type: none"> ◆ Approximately 3809 square feet ◆ 4 bedrooms, 3.5 baths ◆ Spacious 3-car garage with interior access, ample storage and 12 foot interior ceilings ◆ Concrete perimeter bike/walking path ◆ Rapid demand hot water system ◆ Separate gated entrance to Prominence 	<ul style="list-style-type: none"> ◆ Kitchen centers around fireplace and hearth room ◆ Extensive granite counter top space ◆ Raised panel maple cabinets w/matching refrigerator panels ◆ Large Pantry and separate Wine bar ◆ Gloss black deluxe appliances w/5 burner gas range, built in microwave and built in refrigerator with water/ice in door ◆ Dual-sided Fireplace with gas logs



Prominence of Las Palmas, Salinas

Stunning City Light Views in the Foothills

Curving southward off Highway 68, the scenic corridor that links the Monterey Peninsula with the Salinas Valley, River Road hugs the base of the valley's western foothills and is the address for Las Palmas Ranch, a 1,600 acre planned community of homes where respect for land and people is the guiding principle.

Embraced in the natural grandeur of golden hills and California live oaks, each neighborhood in The Community of Las Palmas Ranch has been meticulously designed to preserve treasured views, and provide handsome dwellings for all manner of people and lifestyles. Eight hundred acres, fully one half of The Community, is devoted to paths, trails, parks and open land. The charms of home and the beauties of nature are balanced by practicality; major shopping and employment centers, professional services and entertainments are only a short drive distant.

Architecturally, the residences of Prominence are in the grand tradition of the country manor house. Large classical structures with walls of windows spread confidently among green hilly meadows, their hipped roof projections adding lofty space to the interiors and variety and interest to their exterior profiles.

Prominences residences are showcases for living on an elegant scale in a privileged location with exceptional views. Escape from the city without any loss of sophistication, escape to Prominence.

Information deemed to be accurate but not guaranteed



INTERNATIONAL ESTATES, INC. ~ WWW.INTERNATIONALESTATES.COM ~ PO Box 3152, CARMEL CA
 GAYLE CRUSAN ~ 831-626-5106 ~ GAYLE@REDSHIFT.COM ~ DRE# 01038531
 MARK TAMAGNI ~ 831-596-1019 ~ MTAM@MBAY.NET ~ DRE# 01300454