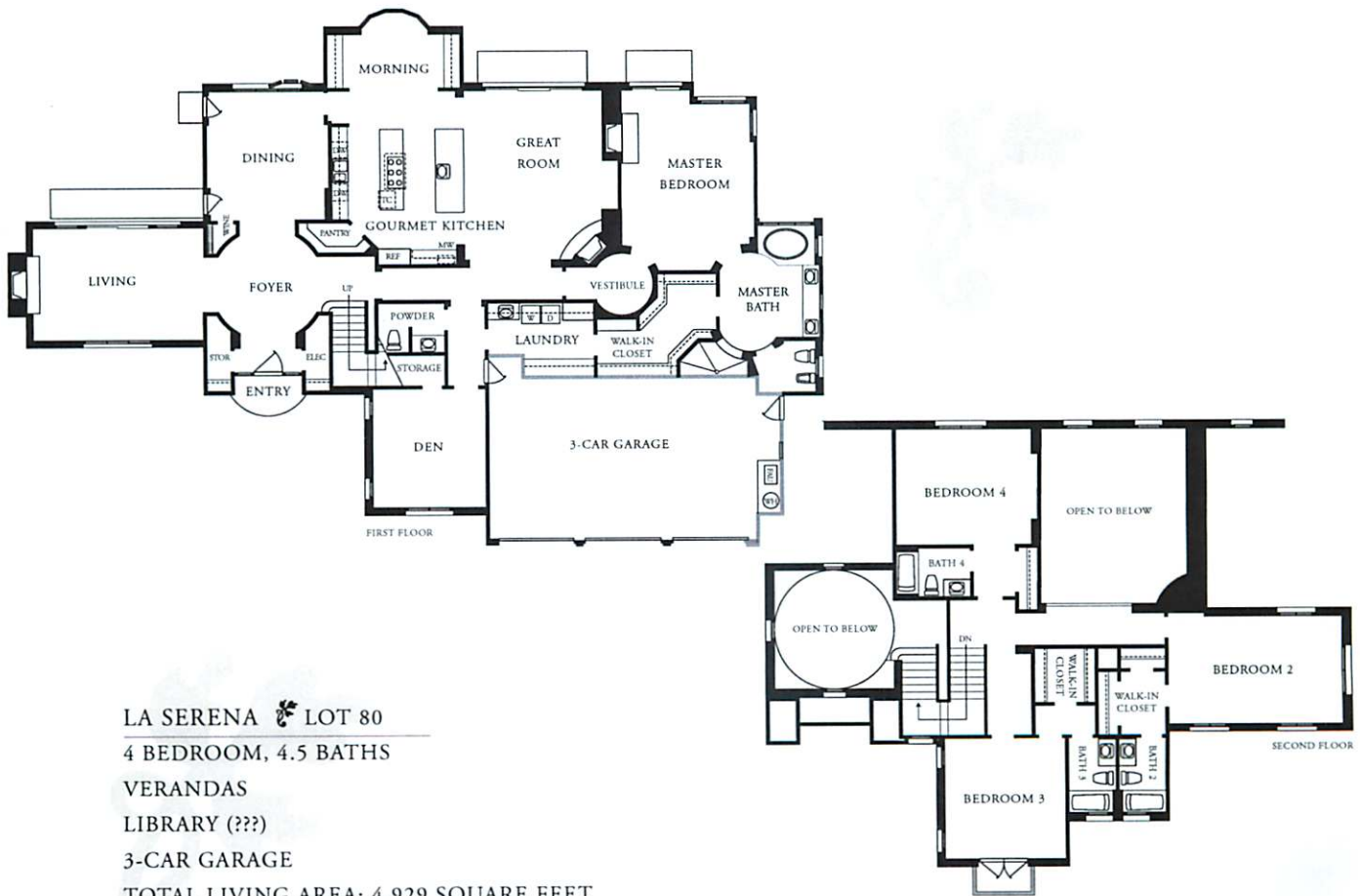





LA SERENA AT MONTERRA



LA SERENA  LOT 80
 4 BEDROOM, 4.5 BATHS
 VERANDAS
 LIBRARY (???)
 3-CAR GARAGE
 TOTAL LIVING AREA: 4,929 SQUARE FEET

FIRST FLOOR LIVING AREA: 3,473 SQUARE FEET
 SECOND FLOOR LIVING AREA: 1,456 SQUARE FEET
 GARAGE AREA: 773 SQUARE FEET

Because of our continuing efforts to improve the quality of our homes, South Valley Developers reserves the right to change prices, terms, specifications, features, materials and finishes without notice. Square footage is approximate.

