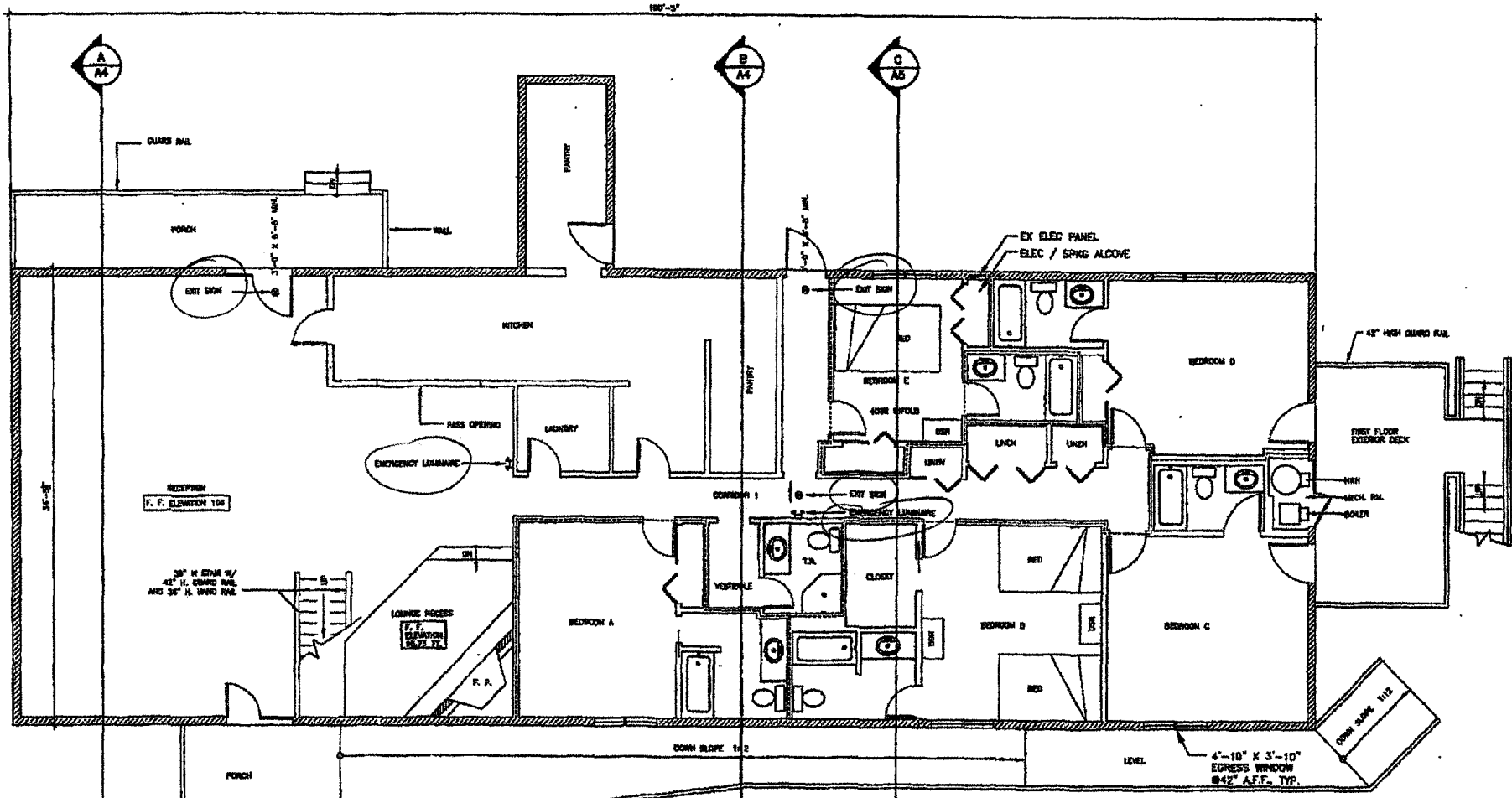


3-EXITS
2-LUMINAIRE

001

MKV ARCHITECTS

10.14.14 FAX 301 403 0344



② FIRST FLOOR PLAN
Scale: 1/4" = 1'-0"

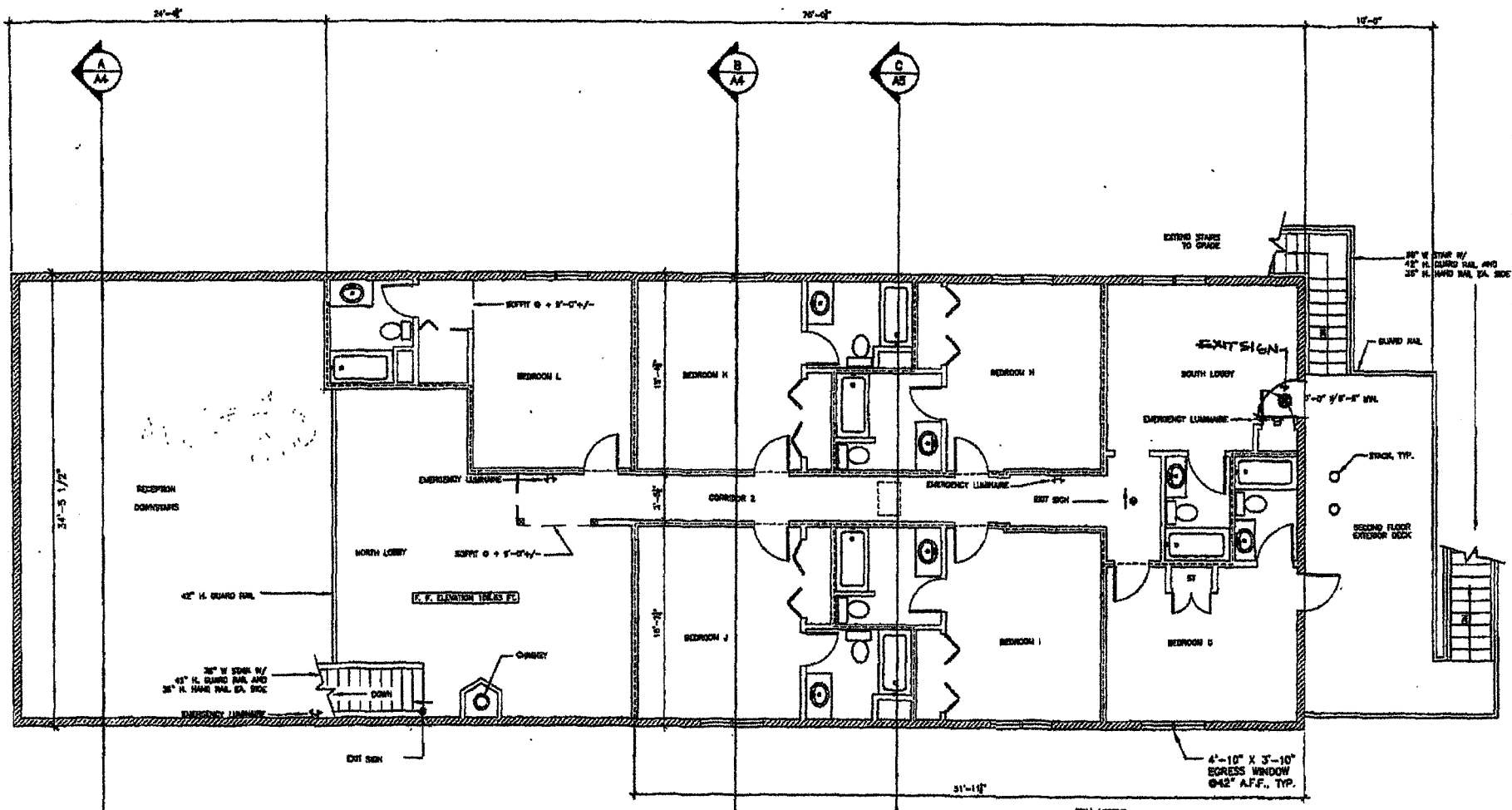
- WALL LEGEND
- INTERIOR WALL: 2 X 4 WOOD STUDS @ 16" O.C. TYPE 2 GYPSUM WALL BOARD AT EACH FACE.
 - FIRE PARTITION: AT 1ST FLOOR, EXTENDS FROM FLOOR TO 2ND FLOOR/CEILING ASSEMBLY. AT 2ND FLOOR, EXTENDS FROM FLOOR TO ROOF/CEILING ASSEMBLY. 2 X 4 WOOD STUDS @ 16" O.C. WITH 5/8" TYPE 3 GYPSUM WALL BOARD AT EACH FACE. 1/2" MIN. FIRE RESISTIVE PER GYPSUM ASSEMBLY W/ JOINTS.
 - EXTERIOR WALL: 2 X 4 WOOD STUDS @ 16" O.C. 5/8" TYPE 3 GYPSUM WALL BOARD.

NOTE: ONLY EXTERIOR WINDOW SHOWN. OTHER WINDOWS INSTALLED AS SPECIFIED BY OWNER.

Dashed →
4 PAGES TOTAL FAXED
R.M.L.

12 MAY 03

A2



3 SECOND FLOOR PLAN

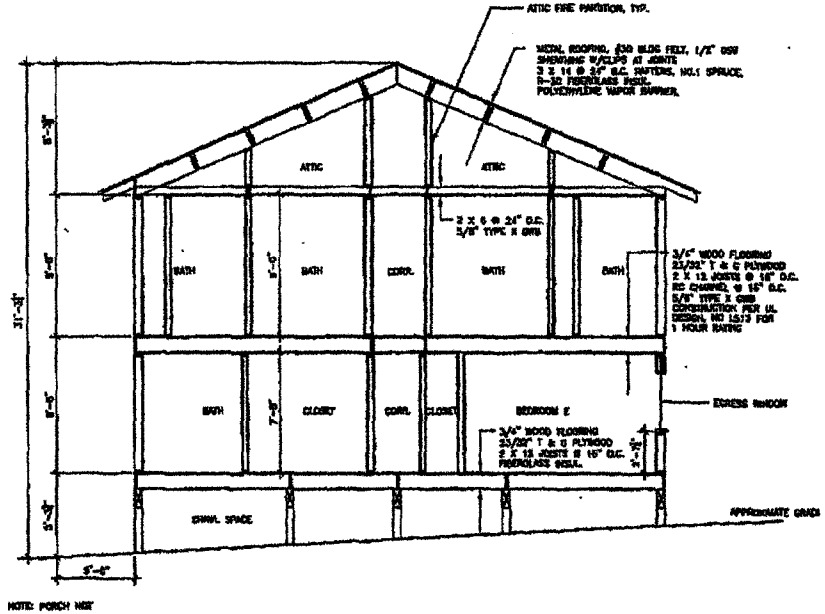
Scale: 1/4" = 1'

- WALL LEGEND**
- INTERIOR WALL: 2 X 4 WOOD STUDS @ 16" O.C. TYPE X GYPSUM WALL BOARD AT EACH SIDE
 - FIRE PARTITION: AT 1ST FLOOR EXTENDS FROM FLOOR TO 2ND FLOOR/CEILING ASSEMBLY; AT 2ND FLOOR EXTENDS FLOOR TO ROOF/CEILING ASSEMBLY. 2 X 4 WOOD STUDS AT 16" O.C. WITH 5/8" TYPE X GYPSUM WALL BOARD AT EACH SIDE. 1 1/2" MIN. FIBERGLASS INSULATION @ 16" O.C.
 - EXTERIOR WALL: 2 X 4 WOOD STUDS @ 16" O.C. 5/8" TYPE X GYPSUM WALL BOARD, WITH INSULATION, 1/2" CW STRUCTURAL SHEATHING, TYPICAL AIR BARRIER, WOOD SOFFIT.

NOTE: ONLY EXTERIOR WINDOWS SHOWN. OTHER WINDOWS INSTALLED AS DIRECTED BY OWNER.

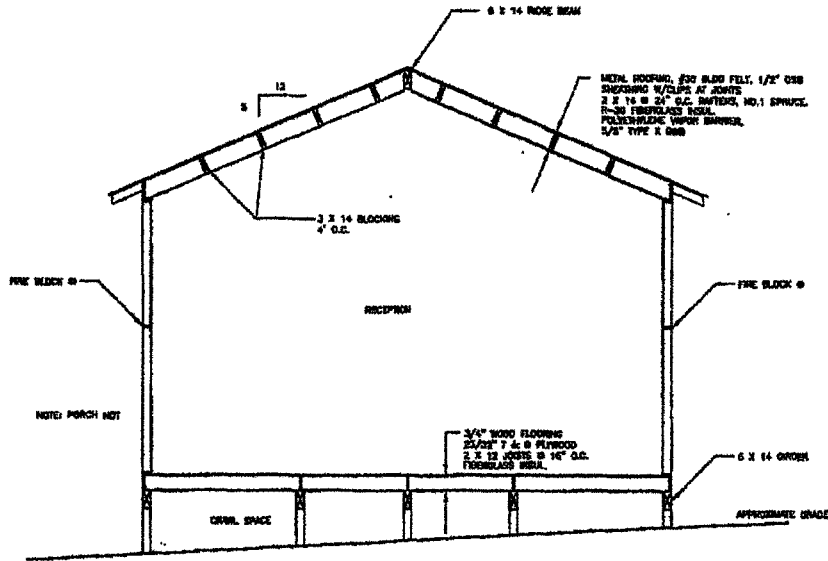
12 MAR 03

A3

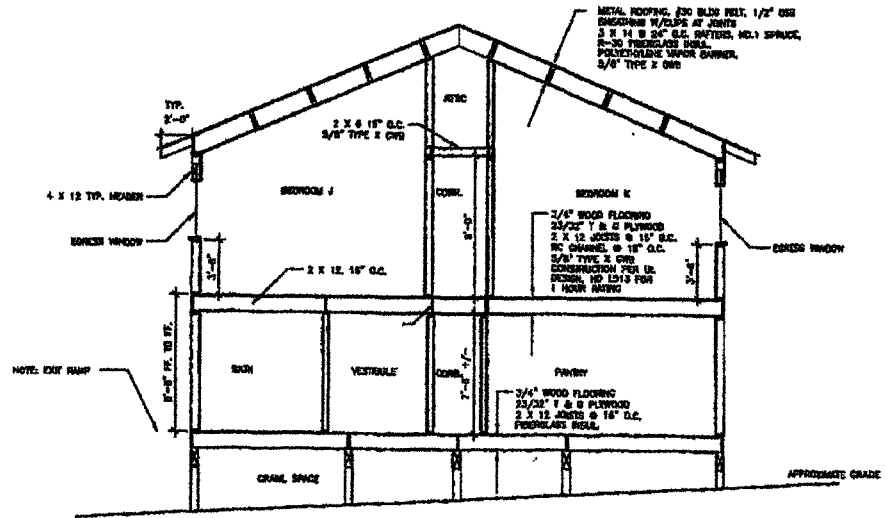


6 SECTION C
 Scale: 1/4" = 1'

121104 03
 A5



4 SECTION A
Scale: 1/4" = 1'



5 SECTION B
Scale: 1/4" = 1'

12 MAY 03

A4